

REGIONAL SPECIALISED METEOROLOGICAL CENTRE-TROPICAL CYCLONES, NEW DELHI  
TROPICAL WEATHER OUTLOOK

**DEMS-RSMC TROPICAL CYCLONES NEW DELHI DATED 07.02.2021**

**TROPICAL WEATHER OUTLOOK FOR NORTH INDIAN OCEAN (THE BAY OF BENGAL AND ARABIAN SEA) VALID FOR NEXT 120 HOURS ISSUED AT 0600 UTC OF 07.02.2021 BASED ON 0300 UTC OF 07.02.2021 .**

**BAY OF BENGAL:**

SCATTERED LOW AND MEDIUM CLOUDS WITH EMBEDDED MODERATE TO INTENSE CONVECTION LAY OVER SOUTH BAY OF BENGAL AND ADJOINING EQUATORIAL INDIAN OCEAN BETWEEN LATITUDE EQUATOR TO 8.0<sup>0</sup>N AND LONGITUDE 80.0<sup>0</sup>E TO 90.0<sup>0</sup>E.

**PROBABILITY OF CYCLOGENESIS(FORMATION OF DEPRESSION) DURING NEXT 120 HRS:n**

24 HOURS	24-48 HOURS	48-72 HOURS	72-96 HOURS	96-120 HOURS
NIL	NIL	NIL	NIL	NIL

**ARABIAN SEA:**

SCATTERED LOW AND MEDIUM CLOUDS WITH EMBEDDED ISOLATED WEAK TO MODERATE CONVECTION LAY OVER EXTREME WESTCENTRAL ADJOINING SOUTHWEST ARABIAN SEA.

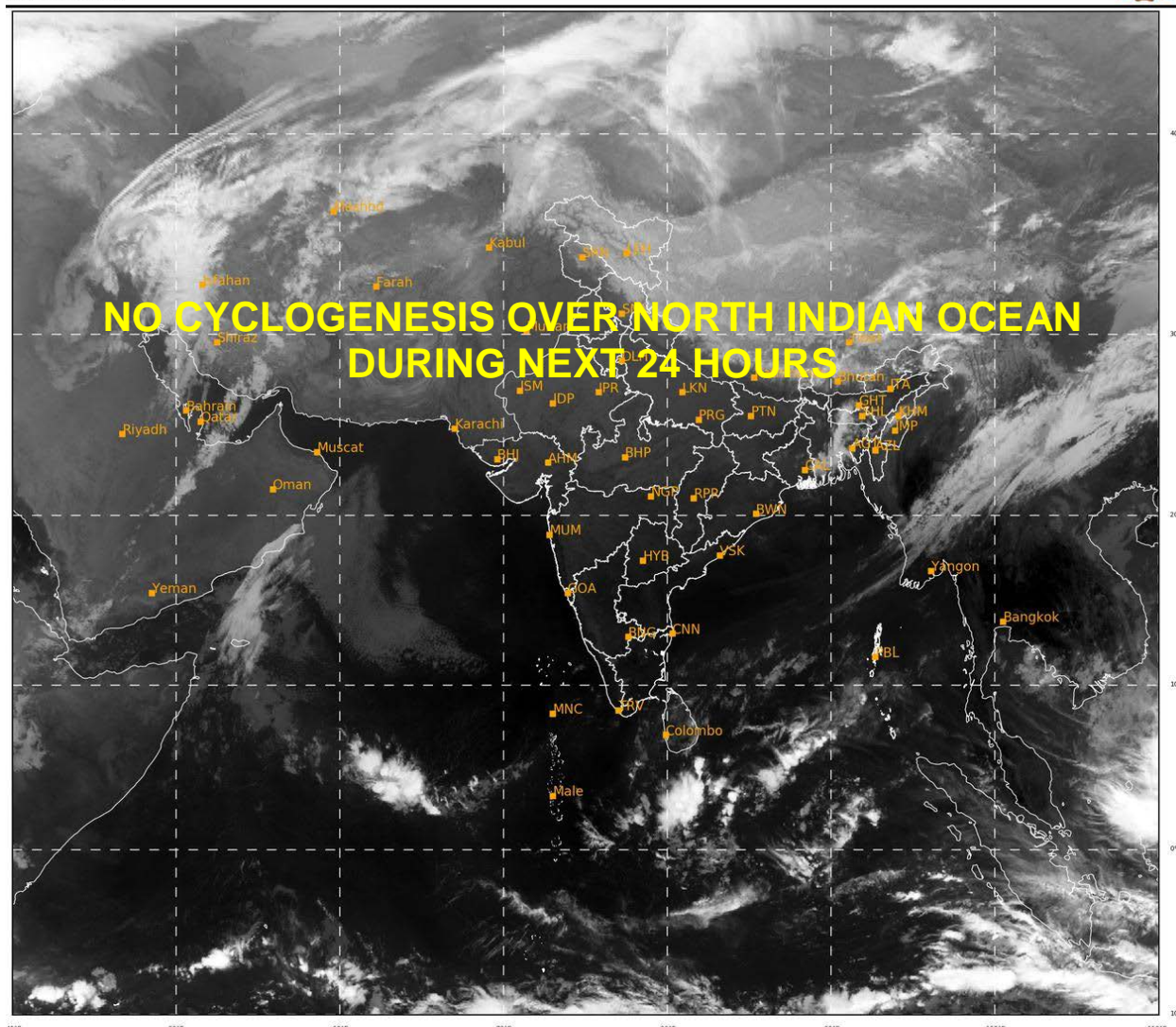
**PROBABILITY OF CYCLOGENESIS(FORMATION OF DEPRESSION) DURING NEXT 120 HRS :**

24 HOURS	24-48 HOURS	48-72 HOURS	72-96 HOURS	96-120 HOURS
NIL	NIL	NIL	NIL	NIL

**REMARKS:** NIL

SAT : INSAT-3D IMG  
 IMG\_TIR1 10.8 um  
 LIC Mercator

07-02-2021/(0300 to 0327) GMT  
 07-02-2021/(0830 to 0857) IST



491

938

IMD,DELHI

PROBABILITY OF CYCLOGENESIS (FORMATION OF DEPRESSION):NIL: 0%, LOW: 1-25%, FAIR: 26-50%, MODERATE: 51-75% AND HIGH: 76-100%



This is a guidance Bulletin for the WMO/ESCAP Panel Member countries. Please visit respective National websites for Country specific Bulletins